



# MILO & ME

EYEWEAR FOR KIDS

Bright City  
Styles







When the city is  
your playground,  
the sky is the limit.

Children want to play – no matter whether they live in the city or in the countryside. And their sound development does not depend on the place they live. Beneficial factors for a child's development are – besides green spaces – also options to be creative, playing with peers and recreational facilities. Cities are also often places of greater cultural diversity, which allows children to broaden their perspectives.

Our new range "Bright City Styles" deriving from the Milo & Me series aims to reflect exactly that. Made for modern children who are looking for their play oases in the city and who do not want to be limited in their creativity. True to the motto

**"When the city is your playground – the sky is the limit."**



# Why Milo & Me?



## Why

A playful exploration of their environment contributes to a child's healthy development. We believe they should make their own experiences and be free to jump and explore and play the way they want to. They should feel good about themselves - no matter where they come from and how they look.



## How

By designing and creating products that help kids with glasses play the way they want to without having to worry about damaging them. By designing cool frames with attractive branding that help kids feel good about wearing glasses and at the same time keeping a friendly price to make sure our products are available for every child.



## What

By providing kids eyewear that is flexible, light weight and resistant enough to play, romp, run, jump and explore. 100 % made with love: cool design, friendly price and non-childish branding.







# Frames

Adjustable temple ends

Inside made of plasticiser-free TPE material

Phillips screw with lock-sleeve



110° V-Groove for simple glazing

Outside made of elastic TR90 material



## Included

Each Milo & Me frame will be delivered with a headband, silicon non-slip temple ends, a microfibre bag, a zipper case and a sticker.

Flexible & resistant frames

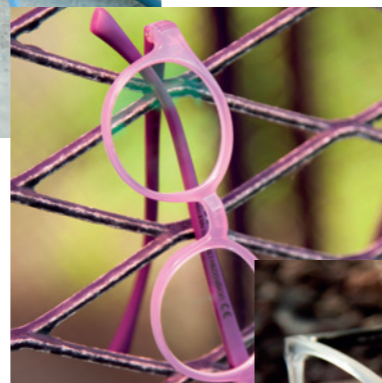




# What's new?

For this range we have given our most popular Milo & Me models Charly, Sara, Alex and Kim a new look. With light, pastel-coloured combinations, we remain true to the tried-and-tested two-tone concept for temple ends and frames. Transparent pastel shades give both boys and girls aged 2 to 12 a certain cosmopolitan flair. Wearing glasses thus becomes a style element that even the youngest can score points with – whether on the way to school, while skateboarding or on the playground.

Because one thing remains the same for all our Milo & Me children's glasses: their frames are made of flexible TR90 material paired with non-plasticised TPE material, adjustable temple ends and provide a 110° V-groove for easy glazing. Thus, an all-round carefree package for children, parents and opticians.





# Bright City Styles



Look for more  
Milo & Me frames in  
this catalogue.







MILO&ME

Charly



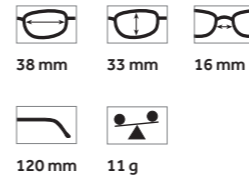


**Charly** 130 1885

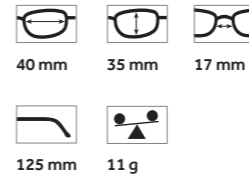


Including headband, non-slip temple ends, microfibre pouch, case and a sticker

### 2-4 years



### 3-5 years



# Charly



**130 1885** - Denim light blue / Dark blue  
col. T77



**130 1886** - Light grey / Grey  
col. T78



**130 1887** - Lilac / Mallow  
col. T81



**130 1888** - Light brown / Brown  
col. T79



**130 1889** - Light grey green / Grey green  
col. T80



**130 1890** - Peach / Dusky Pink  
col. T82





Sara



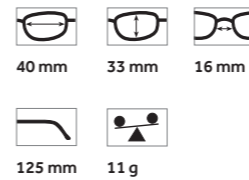


**Sara** 130 1895

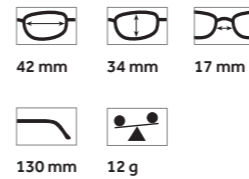


Including headband, non-slip temple ends, microfibre pouch, case and a sticker

### 3-5 years



### 6-9 years



# Sara



**130 1891** - Light grey / Grey  
col. T78



**130 1892** - Lilac / Mallow  
col. T81



**130 1893** - Peach / Dusky pink  
col. T82



**130 1894** - Denim light blue / Dark blue  
col. T77



**130 1895** - Lilac / Mallow  
col. T81



**130 1896** - Peach / Dusky pink  
col. T82





Alex





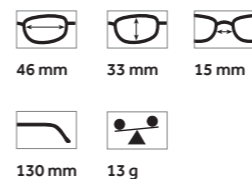
Alex 130 1905



Including headband, non-slip temple ends, microfibre pouch, case and a sticker

# Alex

## 6-9 years



**130 1903** - Denim light blue / Dark blue  
col. T77

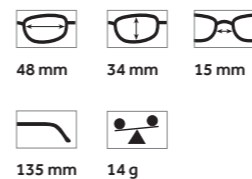


**130 1904** - Light grey / Grey  
col. T78



**130 1905** - Light grey green / Grey green  
col. T80

## 10-12 years



**130 1906** - Transparent clear / Black  
col. T76



**130 1907** - Denim light blue / Dark blue  
col. T77



**130 1908** - Light grey / Grey  
col. T78





Kim





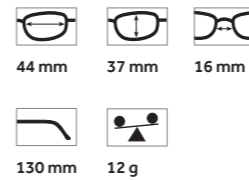
Kim 130 1898



Including headband, non-slip temple ends, microfibre pouch, case and a sticker

# Kim

## 6-9 years



**130 1897** - Transparent clear / Black  
col. T76

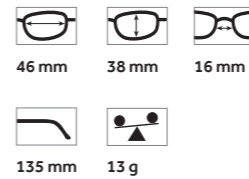


**130 1898** - Denim light blue / Dark blue  
col. T77



**130 1899** - Lilac / Mallow  
col. T81

## 10-12 years



**130 1900** - Light grey / Grey  
col. T78



**130 1901** - Light brown / Brown  
col. T79



**130 1902** - Lilac / Mallow  
col. T81





MILO  
& ME

[www.b-s.de](http://www.b-s.de)

**Breitfeld & Schliekert GmbH**

A **HILCOVISION** COMPANY

Max-Planck-Straße 30  
61184 Karben / Germany  
+49 (0) 6039 993-10 | [info@b-s.de](mailto:info@b-s.de)

[www.milo-me.com](http://www.milo-me.com)



[@milo.and.me.eyewear](https://www.facebook.com/milo.and.me.eyewear)



[@miloandme.eyewear](https://www.instagram.com/miloandme.eyewear)